

# Sources of Blood Meals of Sylvatic *Triatoma guasayana* near Zurima, Bolivia, Assayed with qPCR and 12S Cloning



David E. Lucero<sup>1,2\*</sup>, Wilma Ribera<sup>3</sup>, Juan Carlos Pizarro<sup>3</sup>, Carlos Plaza<sup>4</sup>, Levi W. Gordon<sup>1</sup>, Reynaldo Peña Jr.<sup>1</sup>, Leslie A. Morrissey<sup>1</sup>, Donna M. Rizzo<sup>1</sup>, Lori Stevens<sup>1</sup>

**1** Department of Biology, University of Vermont, Burlington, Vermont, United States of America, **2** Vector-borne Diseases Section, Tennessee Department of Health, Nashville, Tennessee, United States of America, **3** Facultad de Bioquímica, Universidad de San Francisco Xavier de Chuquisaca, Sucre, Bolivia, **4** Departamento de Entomología, Servicio Departamental de Salud, Sucre, Bolivia

## Abstract

**Background:** In this study we compared the utility of two molecular biology techniques, cloning of the mitochondrial 12S ribosomal RNA gene and hydrolysis probe-based qPCR, to identify blood meal sources of sylvatic Chagas disease insect vectors collected with live-bait mouse traps (also known as Noireau traps). Fourteen *T. guasayana* were collected from six georeferenced trap locations in the Andean highlands of the department of Chuquisaca, Bolivia.

**Methodology/Principal Findings:** We detected four blood meals sources with the cloning assay: seven samples were positive for human (*Homo sapiens*), five for chicken (*Gallus gallus*) and unicolored blackbird (*Agelasticus cyanopus*), and one for opossum (*Monodelphis domestica*). Using the qPCR assay we detected chicken (13 vectors), and human (14 vectors) blood meals as well as an additional blood meal source, *Canis sp.* (4 vectors).

**Conclusions/Significance:** We show that cloning of 12S PCR products, which avoids bias associated with developing primers based on *a priori* knowledge, detected blood meal sources not previously considered and that species-specific qPCR is more sensitive. All samples identified as positive for a specific blood meal source by the cloning assay were also positive by qPCR. However, not all samples positive by qPCR were positive by cloning. We show the power of combining the cloning assay with the highly sensitive hydrolysis probe-based qPCR assay provides a more complete picture of blood meal sources for insect disease vectors.

**Citation:** Lucero DE, Ribera W, Pizarro JC, Plaza C, Gordon LW, et al. (2014) Sources of Blood Meals of Sylvatic *Triatoma guasayana* near Zurima, Bolivia, Assayed with qPCR and 12S Cloning. PLoS Negl Trop Dis 8(12): e3365. doi:10.1371/journal.pntd.0003365

**Editor:** Pattamaporn Kittayapong, Mahidol University, Thailand

**Received:** February 9, 2014; **Accepted:** October 23, 2014; **Published:** December 4, 2014

This is an open-access article, free of all copyright, and may be freely reproduced, distributed, transmitted, modified, built upon, or otherwise used by anyone for any lawful purpose. The work is made available under the Creative Commons CC0 public domain dedication.

**Funding:** This work was funded by the National Geographic Society and NSF grant BCS-1216193 as part of the joint NSF-NIH-USDA Ecology and Evolution of Infectious Diseases program. Any opinions, findings, and conclusions or recommendations expressed in this material are those of the author(s) and do not necessarily reflect the views of the funding organizations. The funders had no role in study design, data collection and analysis, decision to publish, or preparation of the manuscript.

**Competing Interests:** The authors have declared that no competing interests exist.

\* Email: david.lucero@tn.gov

## Introduction

Blood-feeding insects in the subfamily Triatominae are vectors of *Trypanosoma cruzi*, the parasite that causes Chagas disease. Approximately 140 species of Triatominae range across the Americas [1] and vary in their role in transmitting human Chagas disease in part because of their preference for sylvatic (wild), peridomestic (immediate surroundings of a house) or domestic (within house) ecotopes. Although it is generally assumed that domestic and peridomestic vectors are important in disease transmission, the role of sylvatic vectors in disease transmission is less understood. Because sylvatic vectors have the potential to colonize houses or simply enter houses to feed and then leave, collecting sylvatic vectors and analyzing their blood meal profiles can provide insight into their movement among domestic, peridomestic and sylvatic ecotopes and their potential role in disease transmission [2].

Not only vector species, but also vertebrate hosts vary in relevance for human transmission. Vectors that feed on human blood are important in disease transmission but because some

mammals are more likely to transmit the parasite to the vectors, insight into the spectrum of blood meal sources is also epidemiologically important. For example, non-infected *Triatoma infestans*, often cited as the most important vector of Chagas disease [3], were 50 times more likely to become infected when feeding on dogs compared to humans [4]. Dogs are also a more dependable food source relative to other hosts, evident by vectors feeding more consistently on dogs across study sites and seasons [5]. A strong correlation between vector parasite infection and vectors feeding on dogs has been reported [6].

Several techniques have documented blood meal profiles of these triatomine insect vectors such as protein-based assays (e.g., antiserum and precipitin tests [6–8]), DNA tests based on the polymerase chain reaction (PCR, e.g., gel electrophoresis [9,10], melt curve analysis [11,12]), direct sequencing [13,14] and cloning followed by sequencing of PCR products [15]. DNA-based approaches have the advantage of being more amenable to the degraded DNA often found in the vector digestive tract. Except for techniques involving DNA sequencing, these approaches require antibodies, PCR primers, or restriction enzymes designed to detect

## Author Summary

The World Health Organization (WHO) estimates that 7 to 8 million people are currently infected with *Trypanosoma cruzi*, the parasite that causes Chagas disease. The WHO recommends insect vector control as the primary prevention method; and insecticide spraying is the most commonly used intervention technique. Sylvatic insect vectors are a special concern because they are a source of reinfestation after insecticides have been applied to living quarters (domestic) and immediate surroundings (peridomestic). To better understand sylvatic insect vector movement, we used two molecular biology techniques to detect the blood meal sources of sylvatic insect vectors. The first technique, cloning of 12S PCR products, allows us to cast a wide net and detect blood meal sources with no previous knowledge of vertebrates or mammals in the study site. After acquiring knowledge of vertebrates in the study site (either through the aforementioned cloning technique, literature review or survey of the area), the second technique, the species-specific hydrolysis probe-based qPCR provides a highly sensitive assay for particular taxa.

specific taxa, and the scope is limited by *a priori* knowledge of potential blood meal sources [16]. For domestic and peridomestic vectors, common blood meal sources (e.g., humans, domestic animals) are known [10–13,15–18]. However, it is challenging to identify potential sources of blood meals for sylvatic vectors. Amplifying DNA from the blood meal using vertebrate or mammalian specific primers followed by cloning of the PCR products has the advantage of being able to cast a wide net in detecting vector blood meal sources [15]; however, cloning is more costly and time consuming than other DNA-based approaches. Cloning, reliant on conventional PCR may be biased toward more recent blood meals because of vector digestion of older blood meals [16,19], and thus less sensitive to all blood meal sources, relative to modern highly sensitive DNA-based approaches such as qPCR [16,20]. The relative sensitivity and specificity of cloning vs. qPCR in detecting blood meal sources collected from the harsh environment of the vector digestive tract has not been examined.

We explore the application of these two molecular techniques to examine the role of sylvatic vectors in the transmission of human Chagas disease, by determining the blood meal sources of sylvatic vectors collected from a region in Bolivia with high disease incidence [21]. We compared two approaches designed to detect blood meal sources from DNA extracted from the vector abdomen. The first approach, cloning of PCR products amplified with general vertebrate primers, broadly identifies all potential vertebrate blood meal sources [15]. The second approach uses highly sensitive qPCR taxa-specific primers and hydrolysis probes to survey for chicken, *Canis sp.* (e.g., dog, wolf and coyote) and human blood meals. To our knowledge this is the first study to use hydrolysis probe-based qPCR to analyze blood meal sources of insect disease vectors and compare the two DNA-based methods for sensitivity and specificity.

## Methods

### Ethics statement

The protocol for handling animal specimens in this study was approved by Universidad de San Francisco Xavier de Chuquisaca Animal Research Committee and follows the European Directive (Directive 2010/63/EU revising Directive 86/609/EEC on the

protection of animals used for scientific purposes, project license number D.F.C.Q.F Y B. N° 237).

### Study area

Located in the Andean highlands of the department of Chuquisaca, Bolivia, the rural landscape of the study area includes xeric valleys [22], with thorny shrubs and cacti adapted to low, seasonal rainfall that defines the dry (8.4 cm average rainfall of May to October) and wet seasons (35.8 cm average rainfall of December to March) [23]. The sampling locations (Mean Center calculated at 65° 08' 2.31" W, 18° 46' 44.26" with ArcGIS, Ver. 10.1, ESRI Inc., Redlands, California, USA) were within 200 m of Rio Chico; six sampling locations were evenly divided between the west and east banks. Elevation of these locations range between 1740 m and 1780 m above mean sea level (AMSL, Figure 1).

The nearest community to the sampling locations is Zurima, ~600 m to the east (Figure 1). Located along Rio Chico, Zurima has an elevation of 1730 m (Mean Center at 18° 46' 34.96" S, 65° 07' 42.36" W). As of the latest national census in 2001, Zurima had a population of 495 (257 females, 238 males) living in 135 houses [24]. The residents are mostly indigenous or of Spanish descent and practice subsistence agriculture [24,25]. Six isolated houses, ranging 14 m to 870 m apart and ~60 m from the closest trap location, are located on the west riverbank (Figure 1). These isolated houses were identified with satellite imagery but never surveyed.

### GIS analysis

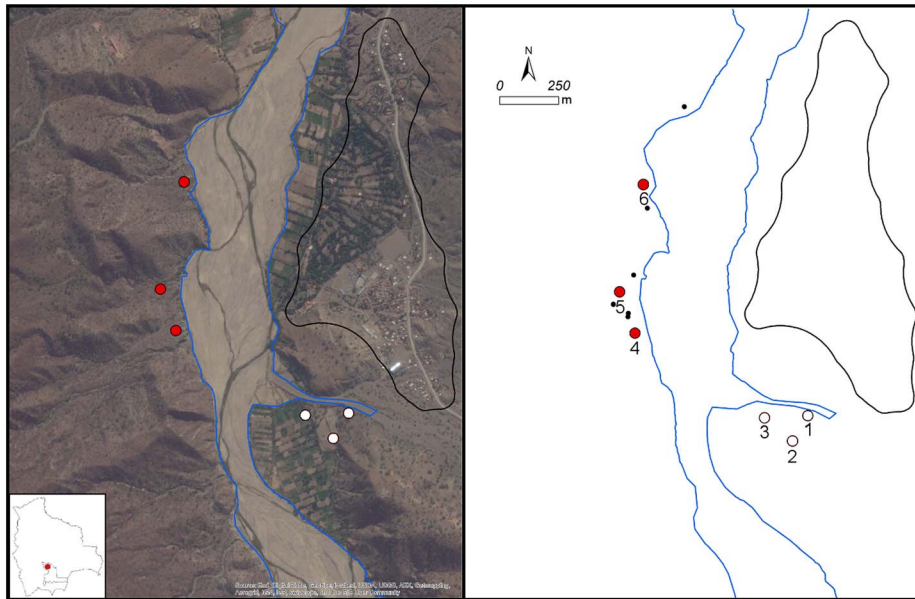
The town boundary of Zurima was defined as a 50 m buffer from houses along the edge of the community. Six isolated houses were geolocated based on freely available satellite imagery (ArcGIS, Ver. 10.1, ESRI Inc., Redlands, California, USA) [26] (Figure 1).

A proximity function (Near) analysis was used to calculate the distance between the traps and town boundaries and thus, the distance of sylvatic vectors from the town as well as the distance between the traps and isolated houses. ArcGIS was used to perform all GIS analyses (ArcGIS, Ver. 10.1, ESRI Inc., Redlands, California, USA).

### Insect vector collection

Trapping many insect vectors is challenging due to the low success rates of traps [27]. We baited traps with live mice (also known as Noireau traps) because a review of the literature suggested these traps attract *T. infestans*, the principal insect vector in the region, more successfully than traps without mice [28] in laboratory studies, and that they have been successful in previous field studies [27,29]. Traps consisted of opaque bottles (15×7 cm) covered with double-sided tape. A mouse was placed inside with a small piece of apple; and the opening was sealed with a metal screening mesh to prevent adult vectors and large nymphs from entering the trap (Figure 2). One to four traps were placed at six georeferenced sampling locations for a total of 17 traps (Figure 1). Traps west of the riverbed were placed in sylvatic areas, while the eastern traps were between the village of Zurima and agricultural areas.

Traps were placed in the field at sunset on September 4<sup>th</sup>, 2012 at ~18:00 and recovered ~12 hours later. Vectors were gently removed from the double-sided tape with forceps, placed individually into plastic flasks, labeled according to the collection site, and transported live to the laboratory. Each trap location was recorded with a handheld GPS receiver (Garmin model 76, WGS 1984).



**Figure 1. Satellite imagery (~1 m resolution, ArcGIS, Ver. 10.1, ESRI Inc., Redlands, California, USA [26]) centered on the riverbed of Rio Chico near the town of Zurima (left).** Digitized town boundary (black polygon), riverbed (blue lines), six isolated houses (small black dots) and numbered locations of the positive (red fill) and negative (white fill) trap sites.  
doi:10.1371/journal.pntd.0003365.g001

### Parasite detection and DNA extraction

*Trypanosoma cruzi* infection was determined using microscopy by USFX (Universidad San Francisco Xavier, Sucre, Bolivia) researchers trained in the safe handling of infectious agents using published methods [21]. DNA was subsequently extracted from the posterior abdomen of each insect using the DNeasy Kit (Qiagen, Valencia, CA) following the manufacturer's protocol, as previously described [10]. DNA concentrations of abdomen extractions were measured with the NanoDrop ND-100 spectro-

photometer. These abdomen extractions, a complex mixture of degraded DNA containing parasite DNA (if infected), digested vector blood meal and vector tissue derived DNA, were also tested for *T. cruzi* by USFX researchers using PCR with the previously reported TCZ primers [21,30]. PCR results were confirmed by SEDES (Servicio Departamental de Salud) in La Paz, Bolivia.

### Detection of blood meal sources

Blood meal sources were assayed using two methods: cloning of PCR products amplified with general vertebrate primers and qPCR using taxa specific primers and hydrolysis probes for chicken, *Canis sp.* and human blood meals (Table 1).

### Detection of blood meal sources: Cloning

We analyzed the blood meal sources of all 14 vectors using the cloning assay following previously published methods [15,31]. Briefly, because the DNA extractions from the insect abdomens potentially contain blood meal DNA from multiple vertebrates, the initial PCR used primers specific for mitochondrial DNA coding for the 12S ribosomal RNA gene of vertebrates (hereafter referred to as 12S primers). Two sets of vertebrate 12S primers were used [22,32], and are referred to hereafter as the Kitano and Melton assays. An ethidium bromide stained, 2% agarose gel was used to verify the ~150 bp PCR products, which were then cloned with the pGEM-T kit (Promega, Madison, WI, USA). Cloned DNA from 12 colonies per insect (or 24 from two vectors because the first 12 did not have a single interpretable sequence) was PCR amplified using the same 12S primers, sequenced using BigDye v3.1 (Applied Biosystems, Foster City, CA, USA) and subsequently analyzed with an ABI PRISM 3730xl DNA analyzer (Beckman Coulter, Fullerton, CA, USA). Sequence alignments and editing were done with Sequencher v4.10 (Gene Codes Corporation, Ann Arbor, MI, USA). Taxonomic identification of the sequences was determined as  $\geq 99\%$  match of 101 bp (Kitano) or 107 bp (Melton) using a BLAST search. To rule out contamination, two controls with nuclease free, DNA grade water instead of template



**Figure 2. Noireau sylvatic insect vector trap.** Traps consisted of plastic containers with a live mouse and wire mesh tops. Double sided sticky tape was placed on the outside of the traps.  
doi:10.1371/journal.pntd.0003365.g002

**Table 1.** Sequence of mitochondrial DNA primers (F = Forward, R = Reverse) and probes (P) used in cloning and qPCR assays to detect vertebrate blood meal sources in Chagas disease insect vectors.

Assay	Target DNA	Sequence (5'–3')
Cloning	Vertebrate 12S rRNA <sup>1</sup>	F: ACTGGGATTAGATACCCCACTATG
		R: ATCGATTATAGAACAGGCTCCTC
Kitano	Vertebrate 12S rRNA <sup>2</sup>	F: CCCAACTGGGATTAGATACCC
		R: GTTTGCTGAAGATGGCGGTA
qPCR	Chicken Cyt <i>b</i> <sup>3</sup>	F: TAGCCATGCACTACACAGCAGACA
		R: TTTGCGTGGAGATTCCGGATGAGT
	<i>Canis sp.</i> Cyt <i>b</i> <sup>3</sup>	P: ACTTGCCGGAACGTACAATACGGCT
		F: CCACAGCATTATGGCTATGTACT
	Human Cyt <i>b</i> <sup>3</sup>	R: AGCTGCGATGATGAAAGGGAGGAT
		P: CAGTGGACAAAGCAACCCCTAACACGA
	F: AGTCCCACCCTCACAGATTCTTT	
	R: AGTAAGCCGAGGCGCTTTGATT	
	P: ACCCTTCATTATTGCAGCCCTAGCAGCACT	

<sup>1</sup>[22].<sup>2</sup>[32].<sup>3</sup>[35].

doi:10.1371/journal.pntd.0003365.t001

DNA went through each step of the cloning and sequencing procedure for each set of primers (i.e., Melton and Kitano).

#### Detection of blood meal sources: qPCR

Based on the results of the cloning assay, combined with previous studies analyzing blood meal sources of vectors from Bolivia, Brazil and Argentina [5,6,10,33,34], species-specific qPCR assays were developed to test for chicken, *Canis sp.* and human blood meal sources. The blood meal qPCR assays were modified from previously described assays targeting the mitochondrial cytochrome *b* gene (hereafter referred to as *Cytb*, [35].

#### Assay validation

The guidelines for the “Minimum Information for Publication of Quantitative qPCR Experiments” (MIQE) were followed to test the assays and interpret results [20]. We used the previously described [35] primer and probe concentrations for *Canis sp.* However, because the reported conditions for the chicken and human assays did not produce consistent results, we tested primer concentrations of 50–900 nM per reaction for chicken and human using DNA from known sources. After selecting the concentration yielding consistent amplification curves, we varied the probe concentration 50–900 nM. In addition, we varied annealing temperatures from 60°C to 62°C for the chicken and human assays. Following optimization, we analyzed the sensitivity of chicken, *Canis sp.* and human qPCR assays by varying the template DNA concentration using 10-fold serial dilutions spanning 10 orders of magnitude ( $10^0$  vs.  $10^{-10}$ ) in triplicate. There were eight no template controls (NTC) consisting of DNA grade H<sub>2</sub>O instead of template. The  $10^0$  template concentrations were 12.46 ng/uL of chicken DNA, 7.06 ng/uL of *Canis sp.* DNA and 7.90 ng/uL of human DNA.

After optimization and sensitivity analyses, chicken and human assays were run in duplicate including all samples, positive controls spanning five orders of magnitude ( $10^0$  to  $10^{-4}$ ) and three or four NTC. We tested for *Canis sp.* in singlicate using half the amount of template used for the other qPCR assays because of limited

DNA template. Because this is the first study to use hydrolysis probe-based qPCR to detect blood meal sources, the interpretation of the qPCR results of one replicate of each sample and at least five positive and three or four NTC controls, were verified by sequencing the qPCR products in one direction using the forward qPCR primer and the same sequencing protocol as the cloning assay. In three cases, because the duplicate trials differed, we sequenced both replicates. Although there was no evidence of NTC amplification before cycle 40, we sequenced NTC with the samples to rule out false positive results.

The qPCR reactions included 10 uL PerfeCTa qPCR Tough-Mix (Quanta Biosciences, Gaithersburg, MD, USA, Catalog # 95112-250), 8 uL of template DNA for human and chicken and 4 uL template DNA for *Canis sp.*, forward primer (200 nM chicken and *Canis sp.*, 300 nM human), reverse primer (60 nM chicken, 200 nM *Canis sp.*, 300 nM human), probe (230 nM chicken, 200 nM *Canis sp.*, 300 nM human) and nuclease free water to make 20 uL. A two-step qPCR cycling protocol was used for all three assays. The chicken and human assays had an initial denaturation at 95°C for 10 minutes, followed by 45 cycles of 95°C for 20 seconds and 60°C for 1 minute, and a final extension of 72°C for 10 minutes. For the *Canis sp.* assay, the initial denaturation was for 5 minutes, followed by 45 cycles of 95°C for 5 seconds and 57°C for 40 seconds with final extension at 72°C for 10 minutes.

Both probes and primers were purchased from Biosearch Technologies (Novato, CA); and qPCR reactions were run on a LightCycler<sup>TM</sup> 480 thermocycler (Roche, Indianapolis, USA). Reagents and master mixes were prepared in a vented hood sterilized by UV light and wiped with 0.4% sodium hypochlorite to minimize contamination. Autoclaved tubes and DNA grade water, along with the DNA-free 96-well plates, filtered tips, pipettes and tube racks wiped with 0.4% sodium hypochlorite were placed 5–10 cm from a UV light source for 1 h before preparing all reagents and master mixes [36].

To compare sylvatic vector blood meal feeding samples to the positive and negative controls, the crossing point (Cp), defined as the cycle where the sample begins to amplify above the

**Table 2.** Blood meal sources of the Chagas disease vector, *Triatoma guasayana* collected from sylvatic locations in Bolivia.

ID-trap site	Vector stage or sex	<i>T. cruzi</i> infection	No. taxa detected by cloning	Human cloning	Human qPCR	Chicken cloning	Chicken qPCR	Dog cloning	Dog qPCR	Blackbird cloning	Opossum cloning
Tg01-4	4 or 5	-	1		+	+	+		+		
Tg02-4	4	-	1		+	+	+				
Tg03-4	2	-	2		+	+	+			+	
Tg04-4	3	-	0		+		+		+		
Tg05-4	F	-	1	+	+		+		+		
Tg06-4	F	-	2	+	+		+		+	+	
Tg07-4	M	-	1		+		+				+
Tg08-4	M	-	3	+	+	+	+			+	
Tg09-4	3	-	1	+	+		+				
Tg10-5	F	-	1		+		+			+	
Tg11-5	2	-	1	+	+		+				
Tg12-5	M	-	2	+	+	+	+				
Tg13-6	F	-	1		+					+	
Tg14-6	F	+	1	+	+		+				
Average or % with blood meal source			1.36	50%	50–100%*	36%	93%	0%	29%	36%	7%

Blood meal sources were determined by either a cloning assay or qPCR using DNA extracted from the vector abdomen.

\* Detected by Kitano cloning assay, all other blood meals identified by cloning were detected with the Melton assay.

† See text for discussion of human qPCR assay.

doi:10.1371/journal.pntd.0003365.t002

**Table 3.** Match between primers used in the cloning assays to identify blood meal sources of *Triatoma guasayana* and the taxa detected, showing that the Melton primers are a better match than the Kitano primers.

taxa	12S Forward (5' to 3')	12S Reverse (5' to 3')
Melton 12S	ACTGGGATTAGATACCCCACTATG	ATCGATTATAGAACAGGCTCCTC
Chicken <sup>1</sup>	-----	-----
Blackbird <sup>2</sup>	-----	-----
Human <sup>3</sup>	-----	-----C-----
Opossum <sup>4</sup>	-----	-----
Dog <sup>5</sup>	-----	-----
Kitano 12S	CCCAAAGTGGGATTAGATACCC	GTTTGCTGAAGATGGCGGTA
Chicken <sup>1</sup>	-----	-CC----CG-G-----
Blackbird <sup>2</sup>	-----	-CC----CG-G-----
Human <sup>3</sup>	-----	-----
Opossum <sup>4</sup>	TA-----	-CC----G-----
Dog <sup>5</sup>	-----	-----

<sup>1</sup>Chicken (*Gallus gallus*), GenBank accession number HQ857212.1.

<sup>2</sup>Unicolored blackbird (*Chrysomus cyanopus*) JX516076.1.

<sup>3</sup>Humans (*Homo sapiens*) NC\_012920.1.

<sup>4</sup>Opossum (*Monodelphis domestica*) AJ508398.1.

<sup>5</sup>Dog (*Canis lupus familiaris*) JF342907.

doi:10.1371/journal.pntd.0003365.t003

background noise [20,37,38], was calculated using the Absolute Quantification Fit Points method from the LightCycler 480 GeneScanner Software V1.5 (Roche, Indianapolis, USA). Reactions were run for 45 cycles. The 40 cycle threshold represents the cycle where significant amplification should be visible if there is at least one molecule of target DNA in the original sample [37].

## Results

### Insect vector collection and parasite infection

Chagas disease vectors were collected at three of the six sampling locations, located furthest from Zurima, and from five of the 17 (30%) traps. All 14 vectors were collected within 100 m of an isolated house (Table S1); and all were *T. guasayana*, a species that has been previously reported in domestic [2], peridomestic and sylvatic [39] ecotopes. The concentration of extracted DNA averaged 33.3 ng/uL (range 2.4–175.22 ng/uL). *T. cruzi* was detected in only one vector (7%) with complete agreement between microscopy and PCR.

### Cloning blood meal detection

The initial PCR products from the 14 *T. guasayana* for both the Melton and Kitano assays were the expected size and thus used in the cloning reactions; even though there was no visible band from the negative control, it was treated the same as the samples to control for potential contamination. The PCR products from the cloning colonies of all 14 samples were also the expected size; the colonies from the negative control did not produce the expected band size indicating there was no contamination. For the Melton assay, 12 colonies from each sample were sequenced. Because no interpretable sequences were obtained from the first 12, an additional 12 colonies were sequenced for samples Tg04 and Tg11. For the Kitano assay, 12 colonies from each sample were sequenced.

Of the 14 *T. guasayana* analyzed, four different blood meal sources were detected with the Melton cloning assay; three of these

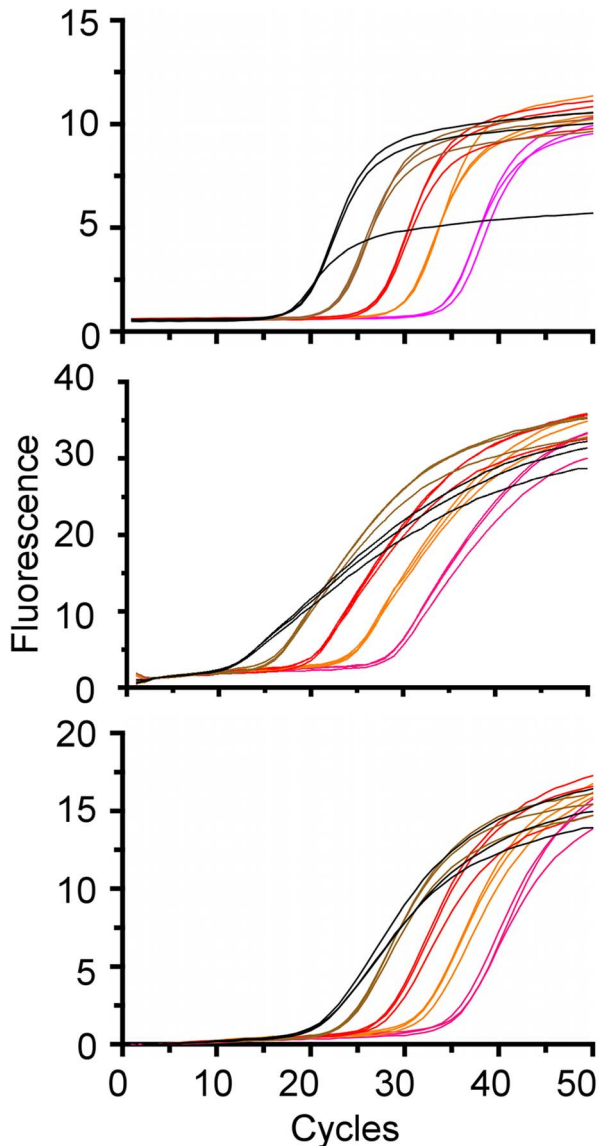
sources were found in more than one *T. guasayana* (Table 2). The most common blood meal source was human, which was found in six *T. guasayana*. Five *T. guasayana* had evidence of feeding on chicken (*Gallus gallus*) and five had fed on unicolored blackbird (*Agelasticus cyanopus*). Opossum (*Monodelphis domestica*) was detected in one *T. guasayana*. The Melton cloning assay detected 57% (8 of 14) of *T. guasayana* feeding on birds from both domestic and sylvatic ecotopes, and 14.3% (2 of the 14) of the vectors feeding on birds were positive for both chicken and unicolored blackbird. Based on the Melton cloning assay, 50% (6 of 14) fed exclusively on domesticated taxa; 14.3% (2 of 14) fed exclusively on sylvatic taxa (i.e., unicolored blackbird); 28.6% (4 of 14) fed on vertebrates from both domestic and sylvatic ecotopes. We were unable to detect a blood meal source for 7% (1 of 14) vectors despite analyzing 24 colonies instead of 12.

For the Kitano cloning assay, only one blood meal source, human, was detected, and from only one vector (Table 2). Overall, the Kitano primers were less successful than the Melton primers, the Kitano assay blood meals were detected from 7% vs. 86% of samples for the Melton primers. Although both authors claim the primers are for species identification among vertebrates, a comparison of sequences in this region of the 12S gene shows that the match varies among taxa and for the Kitano primers, appears to be higher in mammals than birds (Table 3). Interestingly, the Melton primer set did not detect the same blood meal source as the one blood meal the Kitano primer set detected.

Although dogs are a common blood meal source in this region, they were not detected as a blood meal source by either of the cloning assays. The cloning NTC in duplicate, for both the Melton and Kitano assays, did not produce interpretable DNA sequence, ruling out contamination in the cloning assays.

### qPCR blood meal detection

The limit of detection (LOD), or template concentration that can be detected within 95% certainty [20], is  $10^{-4}$  ng/uL for all three qPCR assays (Figure 3). Although positive controls were



**Figure 3. Fluorescence as a function of reaction cycles for (A) chicken, (B) *Canis sp.* and (C) human.** Positive controls were run in triplicate starting with  $10^0$  on the left (black) followed by each successive 10-fold serial dilution in a different color. Amplification curves are shown for the dilutions above the  $10^{-4}$  limit at which template concentration that can be detected with 95% certainty. doi:10.1371/journal.pntd.0003365.g003

detected at more dilute concentrations, we could only yield consistent and reproducible results until  $10^{-4}$  ng/uL. Averages of three replicates per concentration are 3.9 (range 3.7–4.6) cycles apart for chicken (Figure 4), 3.8 (range 3.1–4.3) cycles apart for *Canis sp.* (Figure 5) and 3.3 cycles (range 2.2–3.8) apart for human (Figure 6), respectively, a little higher than the expected 3.3 cycles [37]. The more dilute samples ( $<10^{-5}$  ng/uL) sometimes amplified after the 40 cycles at which one DNA molecule should be detectable (Figure 7) [37]. Four to five positive controls for chicken, *Canis sp.* and human qPCR products were sequenced, including the  $10^{-4}$  ng/uL sample, and correctly identified in a BLAST query.

For the qPCR assay, we found the prevalence of feeding on *Canis sp.*, chicken and human was 29%, 93%, and 50 or 100% (4,

13 and 7 or 14 of 14) respectively (results summarized in Table 2, Cp values for each sample in each assay are shown in Table S2). DNA sequencing confirmed the amplicon was the target DNA in all instances. Attempts to sequence the qPCR product from the NTC were unsuccessful for the chicken and *Canis sp.* assays. In contrast, two of the four human NTC had amplicons identified as human by BLAST search; however, the NTC amplified five cycles later than the lowest positive control ( $10^{-4}$  ng/uL, LOD) and six cycles later than the latest amplifying sample (Table S2). Because of the human DNA amplification from the NTC, we conservatively conclude that at least 50% (the number positive by the cloning assay) of the samples are positive for human. Note that the samples positive for human by cloning tend to have the lowest Cp values, indicating higher concentrations of DNA (samples positive for human by cloning average: Cp = 27.6, average for samples negative for human by cloning: Cp = 34.0).

### Comparison of blood meal detection methods

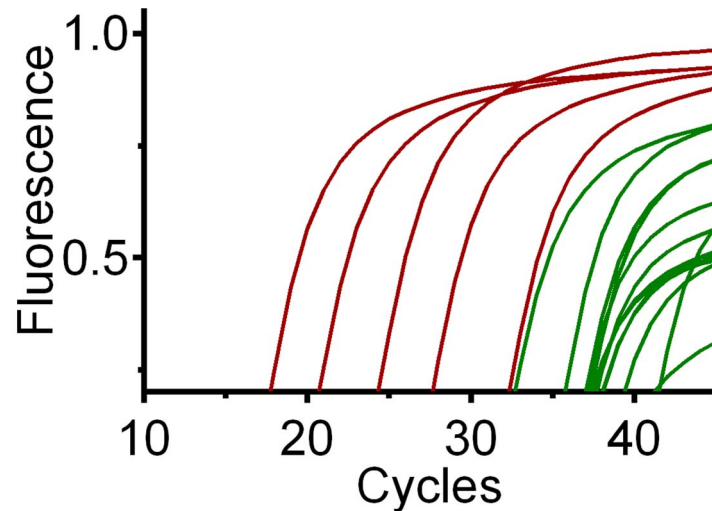
The qPCR assay detected its targeted taxa (i.e., chicken, *Canis sp.* and human) in more blood meals than the cloning assay. For chicken, all five samples identified as positive by the cloning assay were also positive by qPCR; however, qPCR showed that an additional sample had fed on chicken. Similarly for human, all seven samples that were positive by the cloning assays were positive by qPCR and qPCR indicated that the remaining seven were positive for human; however, due to reported NTC amplification (see **QPCR blood meal detection**), only the human cloning results can be unambiguously established. Although the cloning did not detect any feeding on *Canis sp.*, the qPCR assayed was positive for four samples.

### Discussion

We collected 14 sylvatic *T. guasayana* during the dry season (September) in the Andean highlands of the department of Chuquisaca, Bolivia and found a single individual positive for *T. cruzi* by both microscopy and PCR. Using the cloning assay and our newly developed, highly sensitive qPCR assay, we also found at least 50% were positive for human blood meal indicating *T. guasayana* should be further examined for potential epidemiological importance because our study did not explicitly examine parasite transmission.

Our study reports on a limited number of *T. guasayana* because cloning is very resource intensive (see **Cloning blood meal detection**); however, additional specimens should be examined for a more complete picture of sylvatic *T. guasayana* feeding habits. *T. guasayana* from northern Argentina have been reported previously to have a high rate of feeding on humans (3 of 5 blood meals analyzed against blood antisera) and carry a *T. cruzi*-like parasite (2 of 5 analyzed with microscopy), although none of the vectors were positive for both human and the parasite [6,40].

We detected, on average, 1.4 blood meal sources per vector using the cloning assays. Evidence of domestic (chicken, *Canis sp.* and human) blood meal sources was found in all vectors with qPCR. Literature reports adult *T. guasayana* as having high night flight dispersal during the dry season [27,40]. Previous studies of sylvatic Chagas disease vectors in Argentina found the dispersion index for *T. guayasana* was 4.5 times higher for females and 2 times higher for males compared to *T. infestans* the most prevalent domestic vector in this region [41]. They found *T. guasayana* had the highest number of flying individuals and although it does not colonize houses, adults often invade houses. Based on our trap locations, these vectors appear highly mobile, travelling between ~60 m (nearest isolated house) and ~600 m (nearest house in



**Figure 4. Chicken qPCR amplification of 14 samples (green), 5 serial dilutions (red) and NTC (no template control, black).** NTC are not visible because they did not amplify and rise above the X-axis.  
doi:10.1371/journal.pntd.0003365.g004

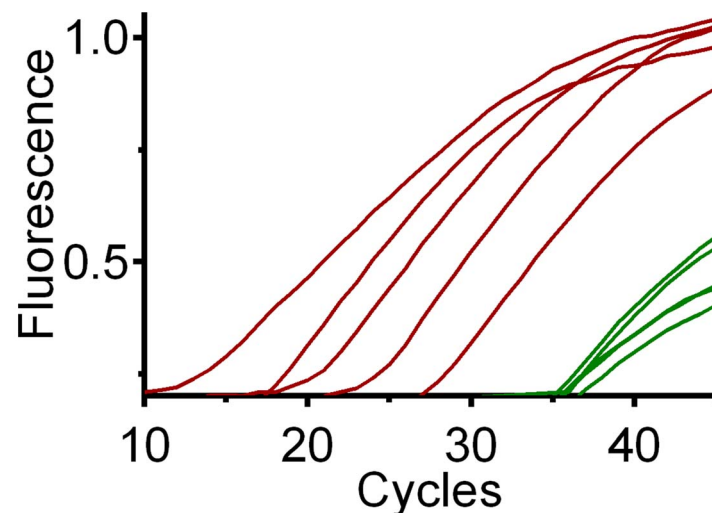
Zurima) to obtain blood meals from domestic sources. The collection sites for *T. guasayana* from this study are 60 m. (Table S1) to the nearest isolated house, which is within the 80 m nymph dispersal distance reported in a study from Argentina. Thus previous studies indicate it is plausible for *T. guasayana* to move to houses, however the food sources also move. Evidence (e.g. trash, fire pits, hunting remains) of humans sleeping/resting in sylvan areas has been reported [42,43] and chickens often roam freely [44], so this result could be from either vectors or hosts moving, or more likely, a combination of both.

All 14 *T. guasayana* from this study had evidence of feeding on domestic animals, but about half also fed on sylvatic animals (unicolored blackbird and opossum). Sylvatic *T. guasayana* from Argentina in previous studies have been reported to exclusively feed on domestic hosts based on an antisera test relying on controls gathered from local animals [45]. The majority of controls used in this Argentinian study were animals not typically found in sylvan

areas (72.7%, 8 of 11) [6,45]. Our cloning method reported here does not rely on the availability of, nor is it limited by *a priori* knowledge of domestic, peridomestic and sylvatic fauna for testing blood meals.

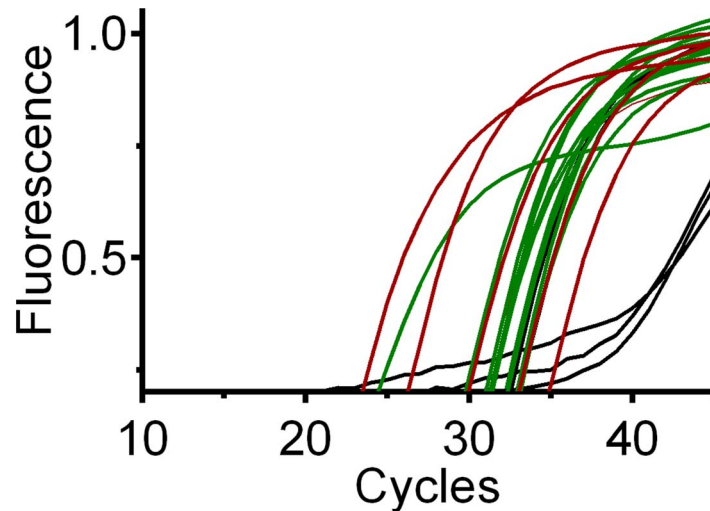
Although qPCR indicates *T. guasayana* in our 14 samples are not feeding on *Canis sp.* as frequently as humans and chickens, dogs have been suggested as sentinels of *T. cruzi* infection in humans [46]. A rural town in northern Argentina reported as many as 65% of the dogs seropositive for *T. cruzi* infection [46]; and *T. guasayana* was correlated with the *T. cruzi* infection of the dog population [46].

The incidence of *T. cruzi* in sylvatic hosts can give some insight into the importance of this broad feeding on the potential transmission of *T. cruzi* to humans. Sylvatic rodents have been reported as blood meal sources for sylvatic vectors in Central [18] and South America [17] and are an important *T. cruzi* reservoir with reportedly high parasitemia [47]; likewise, opossum are an



**Figure 5. *Canis sp.* qPCR amplification of 14 samples (green), 5 serial dilutions (red) and NTC (no template control, black).** NTC are not visible because they did not amplify and rise above the X-axis.  
doi:10.1371/journal.pntd.0003365.g005

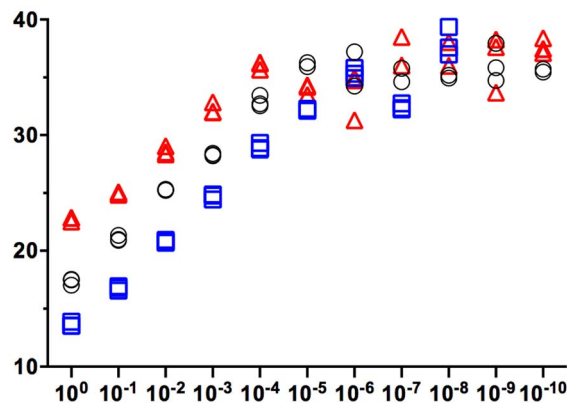




**Figure 6. Human qPCR amplification of 14 samples (green), 5 serial dilutions (red) and NTC (no template control, black).**  
doi:10.1371/journal.pntd.0003365.g006

important reservoir for *T. cruzi* throughout its range [48]. Although birds cannot sustain *T. cruzi* infection, having chickens near domiciliary areas may decrease vector parasitemia, while increasing vector abundance [7].

Fluorescence based qPCR assays are capable of detecting minute amounts of nucleic acids while being quick, simple and specific [20]. Of the two basic qPCR approaches (i.e., high resolution melting (HRM) and hydrolysis probe assays), HRM assays have recently been reported for detecting multiple blood meals; however, the resolution of taxa with similar  $T_m$  [11] (for example chicken and human 86.27 and 85.79, respectively) could yield indistinguishable genotype signatures. Similarly, a recent study used HRM to detect blood meals using *I2S* vertebrate primers; however, multiple feedings by a vector was not examined [12]. This is the first report of a hydrolysis probe-based qPCR assay for detecting vector blood meal sources. Probe-based assays can be multiplexed and have the potential to be more specific, more sensitive, and more reproducible. Although the assays reported here examined each taxa in a separate assay, multiplex assays could be developed using probes with different fluorescence for each potential vertebrate host.



**Figure 7. Cp (crossing point) vs. serial dilutions for chicken (black circle), *Canis sp.* (blue square) and human (red triangle) assays in triplicate.**  
doi:10.1371/journal.pntd.0003365.g007

There are few controlled experiments for blood meal detection. Although insect vectors require a feeding to molt into each lifecycle stage and many Triatominae can live up to two years [49,50], researchers have detected blood meals in lower abdomen extractions only 70 days post feeding using less sensitive PCR methods [18]. Numerous studies have used days post feeding as an indicator of assay sensitivity [9,11,18,19]. An alternative approach is to assess PCR sensitivity with serial dilutions, while examining any temporal effects of blood meal digestion using days post feeding. One study successfully detected template until 21 days post feeding with sensitivity reported until  $10^{-1}$ ,  $10^{-3}$  and  $10^{-2}$  for chicken, dog and human, respectively [51]. Our study is the first to examine qPCR sensitivity using serially diluted controls. We found a lower detection limit and thus present more sensitive assays than reported for conventional end-point PCR (chicken: 3 orders of magnitude, *Canis sp.*: 1 order of magnitude and human: 2 orders of magnitude) [51]. Temporal effects of blood meal digestion has not yet been examined for hydrolysis probe-based qPCR.

Despite extreme efforts to control for contamination, the qPCR assay showed amplification of human DNA in the NTC, suggesting caution in interpreting results. We ran samples in duplicate or triplicate with high volumes of template DNA to reduce the likelihood of false positives. Sequencing of qPCR products, used to verify results, showed we were unable to eliminate human contamination; however, the combination of the cloning assay results and the qPCR amplification of samples at least 5 cycles before the NTC supports our conclusion that a significant number of these vectors are feeding on humans. Previous studies have shown some reagents may be contaminated with human DNA and have encouraged researchers to position tubes on their sides with UV treatment within 2.54 cm [52,53], differing from our upright placement of tubes with DNA grade water within 10 cm of a UV light source. Therefore we speculate our DNA grade water, used to prepare other reagents, as a potential source of contamination.

This study demonstrates the power of combining the cloning assay with the highly sensitive hydrolysis probe-based qPCR to provide a more complete picture of the blood meal sources of insect disease vectors. Our data show that humans and chickens are major food sources for sylvatic *T. guasayana* based on the

qPCR assay, while the cloning assay was able to discover that *T. guasayana* are also feeding on wild animals. Future studies should include sensitivity analysis of qPCR after blood meals have been subject to various lengths of digestion by the vector and, in addition, would benefit from this dual approach, the cloning assay to gather *a priori* information on actual food sources perhaps on a larger sample size of pooled triatomine blood meals, followed by the highly sensitive qPCR assay to determine feeding habits of individual triatomines. Combined with Noireau traps, these methods can help us unravel the role of sylvatic insect vectors in the transmission of human Chagas disease.

## Supporting Information

**Table S1** Summary of trap sites and isolated houses. (DOCX)

## References

- Stevens L, Dorn PL, Schmidt JO, Klotz JH, Lucero D, et al. (2011) Kissing Bugs. The Vectors of Chagas. *Advances in parasitology* 75: 169–192.
- Vazquez-Prokopec GM, Cecere MC, Canale DM, Gurtler RE, Kitron U (2005) Spatiotemporal patterns of reinfestation by *Triatoma guasayana* (Hemiptera: Reduviidae) in a rural community of northwestern Argentina. *Journal of medical entomology* 42: 571–581.
- Dias JC (2007) Southern Cone Initiative for the elimination of domestic populations of *Triatoma infestans* and the interruption of transfusional Chagas disease. Historical aspects, present situation, and perspectives. *Memorias do Instituto Oswaldo Cruz* 102 Suppl 1: 11–18.
- Gurtler RE, Cecere MC, Castanera MB, Canale D, Lauricella MA, et al. (1996) Probability of infection with *Trypanosoma cruzi* of the vector *Triatoma infestans* fed on infected humans and dogs in northwest Argentina. *The American journal of tropical medicine and hygiene* 55: 24–31.
- Gurtler RE, Cecere MC, Vazquez DP, Chuit R, Cohen JE (1996) Host-feeding patterns of domiciliary *Triatoma infestans* (Hemiptera: Reduviidae) in Northwest Argentina: seasonal and instar variation. *Journal of medical entomology* 33: 15–26.
- Wisnivesky-Colli C, Gurtler RE, Solarz N, Salomon D, Ruiz A (1982) Feeding patterns of *Triatoma infestans* (Hemiptera: Reduviidae) in relation to transmission of American trypanosomiasis in Argentina. *Journal of medical entomology* 19: 645–654.
- Gurtler RE, Cohen JE, Cecere MC, Lauricella MA, Chuit R, et al. (1998) Influence of humans and domestic animals on the household prevalence of *Trypanosoma cruzi* in *Triatoma infestans* populations in northwest Argentina. *The American journal of tropical medicine and hygiene* 58: 748–758.
- Zarate LG, Zarate RJ, Tempelis CH, Goldsmith RS (1980) The biology and behavior of *Triatoma barberi* (Hemiptera: Reduviidae) in Mexico. I. Blood meal sources and infection with *Trypanosoma cruzi*. *Journal of medical entomology* 17: 103–116.
- Pizarro JC, Lucero D, Stevens L (2007) A method for the identification of guinea pig blood meal in the Chagas disease vector, *Triatoma infestans*. *Kinetoplastid biology and disease* 6: 1.
- Pizarro JC, Stevens L (2008) A new method for forensic DNA analysis of the blood meal in Chagas disease vectors demonstrated using *Triatoma infestans* from Chuquisaca, Bolivia. *PLoS ONE* 3: e3585.
- Pena VH, Fernandez GJ, Gomez-Palacio AM, Mejia-Jaramillo AM, Cantillo O, et al. (2012) High-resolution melting (HRM) of the cytochrome B gene: a powerful approach to identify blood-meal sources in Chagas disease Vectors. *PLoS neglected tropical diseases* 6: e1530.
- Ibanez-Cervantes G, Martinez-Ibarra A, Noguera-Torres B, Lopez-Orduna E, Alonso AL, et al. (2013) Identification by Q-PCR of *Trypanosoma cruzi* lineage and determination of blood meal sources in triatomine gut samples in Mexico. *Parasitology international* 62: 36–43.
- Bosseno MF, Garcia LS, Baunaure F, Gastelum EM, Gutierrez MS, et al. (2006) Identification in triatomine vectors of feeding sources and *Trypanosoma cruzi* variants by heteroduplex assay and a multiplex minixon polymerase chain reaction. *The American journal of tropical medicine and hygiene* 74: 303–305.
- Irwin DM, Kocher TD, Wilson AC (1991) Evolution of the cytochrome b gene of mammals. *Journal of molecular evolution* 32: 128–144.
- Stevens L, Dorn PL, Hobson J, de la Rua NM, Lucero DE, et al. (2012) Vector blood meals and Chagas disease transmission potential, United States. *Emerging infectious diseases* 18: 646–649.
- Kent RJ (2009) Molecular methods for arthropod bloodmeal identification and applications to ecological and vector-borne disease studies. *Molecular ecology resources* 9: 4–18.
- Canals M, Cruzat L, Molina MC, Ferreira A, Cattán PE (2001) Blood host sources of *Mephaia spinolai* (Heteroptera: Reduviidae), wild vector of Chagas disease in Chile. *Journal of medical entomology* 38: 303–307.
- Mota J, Chacon JC, Gutierrez-Cabrera AE, Sanchez-Cordero V, Wirtz RA, et al. (2007) Identification of blood meal source and infection with *Trypanosoma cruzi* of Chagas disease vectors using a multiplex cytochrome b polymerase chain reaction assay. *Vector Borne Zoonotic Dis* 7: 617–627.
- Oshaghi MA, Chavshin AR, Vatandoost H, Yaaghoobi F, Mohtarami F, et al. (2006) Effects of post-ingestion and physical conditions on PCR amplification of host blood meal DNA in mosquitoes. *Experimental parasitology* 112: 232–236.
- Bustin SA, Benes V, Garson JA, Hellemans J, Huggett J, et al. (2009) The MIQE guidelines: minimum information for publication of quantitative real-time PCR experiments. *Clinical chemistry* 55: 611–622.
- Pizarro JC, Lucero DE, Stevens L (2007) PCR reveals significantly higher rates of *Trypanosoma cruzi* infection than microscopy in the Chagas vector, *Triatoma infestans*: high rates found in Chuquisaca, Bolivia. *BMC infectious diseases* 7: 66.
- Melton T, Holland C (2007) Routine forensic use of the mitochondrial 12S ribosomal RNA gene for species identification. *Journal of forensic sciences* 52: 1305–1307.
- WVO (2010) Zurima Weather, Bolivia Weather Averages.
- Estadística INd (2001) Censo De Poblacion y Vivienda - 2001 Poblacion Por Departamentos, Provincias, Secciones Municipales, Localidades y Organizaciones Comunitarias. La Paz, Bolivia: Instituto Nacional de Estadística.
- International MRG (2008) World Directory of Minorities and Indigenous Peoples - Bolivia: Highland Aymara and Quechua. In: International MRG, editor: The United Nations Refugee Agency.
- Esri (2014) World Imagery. Esri.
- Noireau F, Flores R, Vargas F (1999) Trapping sylvatic *Triatominae* (Reduviidae) in hollow trees. *Transactions of the Royal Society of Tropical Medicine and Hygiene* 93: 13–14.
- Ryelandt J, Noireau F, Lazzari CR (2011) A multimodal bait for trapping blood-sucking arthropods. *Acta tropica* 117: 131–136.
- Abad-Franch F, Noireau F, Paucar A, Aguilar HM, Carpio C, et al. (2000) The use of live-bait traps for the study of sylvatic *Rhodnius* populations (Hemiptera: Reduviidae) in palm trees. *Transactions of the Royal Society of Tropical Medicine and Hygiene* 94: 629–630.
- Moser DR, Kirchhoff LV, Donelson JE (1989) Detection of *Trypanosoma cruzi* by DNA amplification using the polymerase chain reaction. *Journal of clinical microbiology* 27: 1477–1482.
- Klotz SA, Schmidt JO, Dorn PL, Ivanyi C, Sullivan KR, et al. (2014) Free-roaming Kissing Bugs, Vectors of Chagas Disease, Feed Often on Humans in the Southwest. *The American journal of medicine* 127: 421–426.
- Kitano T, Umetsu K, Tian W, Osawa M (2007) Two universal primer sets for species identification among vertebrates. *International journal of legal medicine* 121: 423–427.
- Forattini OP, Barata JM, Santos JL, Silveira AC (1982) [Feeding habits, natural infection and distribution of domiciliary triatominae in the central region of Brazil]. *Revista de saude publica* 16: 171–204.
- Wisnivesky-Colli C, Ruiz AM, Ledesma O, Gutler RE, Lauricella M, et al. (1987) [Home ecology of trypanosomiasis americana: feeding profile of *Triatoma infestans* in a rural area of the Santiago del Estero province, Argentina]. *Revista da Sociedade Brasileira de Medicina Tropical* 20: 31–39.
- Schill WB, Mathes MV (2008) Real-time PCR detection and quantification of nine potential sources of fecal contamination by analysis of mitochondrial cytochrome b targets. *Environmental science & technology* 42: 5229–5234.
- Corless CE, Guiver M, Borrow R, Edwards-Jones V, Kaczmarek EB, et al. (2000) Contamination and sensitivity issues with a real-time universal 16S rRNA PCR. *Journal of clinical microbiology* 38: 1747–1752.
- IDT (2012) qPCR Application Guide. Prime Time. 3rd ed: Integrated DNA Technologies.
- Roche (2013) LightCycler 480 Instrument Operators Manual Software Version 1.5.

39. Noireau F, Flores R, Gutierrez T, Abad-Franch F, Flores E, et al. (2000) Natural ecotopes of *Triatoma infestans* dark morph and other sylvatic triatomines in the Bolivian Chaco. *Transactions of the Royal Society of Tropical Medicine and Hygiene* 94: 23–27.
40. Wisnivesky-Colli C, Gurtler RE, Solarz ND, Schweigmann NJ, Pietrokovsky SM, et al. (1993) Dispersive flight and house invasion by *Triatoma guasayana* and *Triatoma sordida* in Argentina. *Memorias do Instituto Oswaldo Cruz* 88: 27–32.
41. Hernandez ML, Abraham LB, Dujardin JP, Gorla DE, Catala SS (2011) Phenotypic variability and population structure of peridomestic *Triatoma infestans* in rural areas of the arid Chaco (Western Argentina): spatial influence of macro- and microhabitats. *Vector Borne Zoonotic Dis* 11: 503–513.
42. Stevens L, Monroy MC, Rodas AG, Dorn PL (2014) Hunting, Swimming, and Worshipping: Human Cultural Practices Illuminate the Blood Meal Sources of Cave Dwelling Chagas Vectors (*Triatoma dimidiata*) in Guatemala and Belize. *PLoS neglected tropical diseases* 8: e3047.
43. Buitrago NLR, Bosseno MF, Waleckx E, Brémond P, Vidaurre P, et al. (2013) Risk of transmission of *Trypanosoma cruzi* by wild *Triatoma infestans* (Hemiptera: Reduviidae) in Bolivia supported by the detection of human blood meals. *Infection, Genetics and Evolution* 19: 141–144.
44. Pellecer MJ, Dorn PL, Bustamante DM, Rodas A, Monroy MC (2013) Vector blood meals are an early indicator of the effectiveness of the Ecohealth approach in halting Chagas transmission in Guatemala. *The American journal of tropical medicine and hygiene* 88: 638–644.
45. Gajate PP, Bottazzi MV, Pietrokovsky SM, WISNIVESKY-COLLI C (1996) Potential colonization of the peridomicile by *Triatoma guasayana* (Hemiptera: Reduviidae) in Santiago del Estero, Argentina. *Journal of medical entomology* 33: 635–639.
46. Castanera MB, Lauricella MA, Chuit R, Gurtler RE (1998) Evaluation of dogs as sentinels of the transmission of *Trypanosoma cruzi* in a rural area of north-western Argentina. *Annals of tropical medicine and parasitology* 92: 671–683.
47. Ramsey JM, Gutierrez-Cabrera AE, Salgado-Ramirez L, Peterson AT, Sanchez-Cordero V, et al. (2012) Ecological connectivity of *Trypanosoma cruzi* reservoirs and *Triatoma pallidipennis* hosts in an anthropogenic landscape with endemic Chagas disease. *PLoS One* 7: e46013.
48. Bern C, Kjos S, Yabsley MJ, Montgomery SP (2011) *Trypanosoma cruzi* and Chagas' disease in the United States. *Clinical microbiology reviews* 24: 655–681.
49. Zeledon R, Guardia VM, Zuniga A, Swartzwelder JC (1970) Biology and ethology of *Triatoma dimidiata* (Latreille, 1811). II. Life span of adults and fecundity and fertility of females. *Journal of medical entomology* 7: 462–469.
50. Zeledon R, Guardia VM, Zuniga A, Swartzwelder JC (1970) Biology and ethology of *Triatoma dimidiata* (Latreille, 1811). I. Life cycle, amount of blood ingested, resistance of starvation, and size of adults. *Journal of medical entomology* 7: 313–319.
51. Pinto J, Roellig DM, Gilman RH, Calderon M, Bartra C, et al. (2012) Temporal differences in blood meal detection from the midguts of *Triatoma infestans*. *Revista do Instituto de Medicina Tropical de Sao Paulo* 54: 83–87.
52. Champlot S, Berthelot C, Pruvost MI, Bennett EA, Grange T, et al. An efficient multistrategy DNA decontamination procedure of PCR reagents for hypersensitive PCR applications. *PLoS ONE* 5: e13042.
53. Tamariz J, Voynarovska K, Prinz M, Caragine T (2006) The application of ultraviolet irradiation to exogenous sources of DNA in plasticware and water for the amplification of low copy number DNA. *Journal of forensic sciences* 51: 790–794.